



October 2021

SUPPORT US

Support For A Healthy Community



A Note From Our Executive Director

Gratitude.

This note comes with a deep sense of gratitude for the community support we received for our **TOGETHER** Food Bank appeal. Our food security programs, services and team have been working incredibly hard to support the ongoing and changing hunger needs of our residents. At times, it can feel challenging for our staff and most of all our food bank clients as they identify a need for support and are experiencing hunger related issues and challenges.



However, this community has shown support in many ways which create a strong sense of belonging and connectivity at a time when we still feel very much apart, separate and even may be divisive.

Your support showed up this month with generous donations and cheques being delivered to our building or made online, it was actions like girl guides in our community pledging, in a cold wet parking lot, their commitment to their community and carrying heavy bags to our front door to donate non-perishable food items. It looked like young school aged children donating their birthday money or raising funds through collecting recycling in their neighborhoods.

At a time when things feel challenging and divisive, this past month to us felt like unity, caring and **TOGETHER**-ness. For all those acts: big, small, silent or recognized, we are incredibly grateful for every way in which you showed up because it made a difference.

With Gratitude,
Jackie



Huge Success - Thank You

Our recent **TOGETHER** Food Bank Appeal was a huge success - a great big thank you to all the donors who made contributions that helped us raise a total of just over \$120,000 to put towards ensuring every resident of Whistler has access to healthy and nutritious food.



[Learn More About Food Security Programs](#)



New Social Enterprise: Re-Love-It

Our social enterprises generate revenue to support programs and associated expenses so that Whistler Community Services Society can continue to support and advocate for a healthy community. The circular economy is tightly intertwined with the social economy of our community, a unique approach to supporting one another, **TOGETHER**. The Re-Love-It store is our foray into the online retail world in the rapidly growing second hand market.

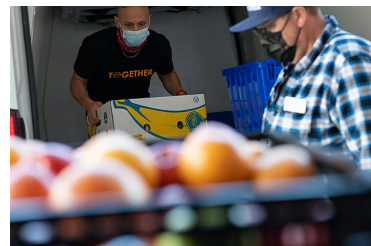
[Learn More](#)

New Food Bank Hours

As of October 25th, we have updated hours for the food bank as noted below:

Drop-In: Mondays, Wednesdays & Fridays 1:30 pm-4:30 pm.

Appointments: Tuesdays & Thursdays



[Find Out More](#)

Temporary Emergency Housing Program

The Temporary Emergency Housing program is designed for Whistler and area community members to access safe and temporary housing at no cost based on financial needs, emergency situations and extenuating circumstances.

Participants must meet with a WCSS Outreach Worker prior to accessing housing to assess eligibility. This program is made possible by UBCM (Union of British Columbia Municipalities)



Strengthening Communities' Program and is a partnership with the RMOW.

More Info



Holiday Hampers Are Back!

The most popular seasonal program is back - for clients and for donors. Our Holiday Hamper program helps Whistler residents have a memorable holiday period each December by supporting local families who find it difficult to put on a celebration with food and gifts this time of year.

This client testimonial from 2020 exemplifies the power of this program:

"I wanted to take a moment to thank you for including us into your 2020 Holiday Hamper program. We loved our hamper!"

It was great to get a choice of the grocery store where I could pick up our Holiday essentials. It was great to get a choice of the grocery store where I could pick up our Holiday essentials.

I also loved the idea of a gift card for my son's presents.

That way, I was able to get him exactly what he wanted and I must say that it was a big hit!"

[Request A Hamper](#)

[Donate To A Hamper](#)

Whistler Community Services Society provides inclusive support to build a resilient community. Following our values of *Trust, Respect, Inclusion, Advocacy, and Collaboration*; we aim to work with the community to deliver low barrier services for healthy living.

Considering leaving an estate gift to Whistler Community Services Society?

Learn more on how to do so [here](#).

Thank You



Copyright © 2020 Whistler Community Services Society, All rights reserved.

Our mailing address is:

8000 Nesters Road, Whistler, BC, V8E 0G4

Want to change how you receive these emails?

You can [unsubscribe from this list](#).